

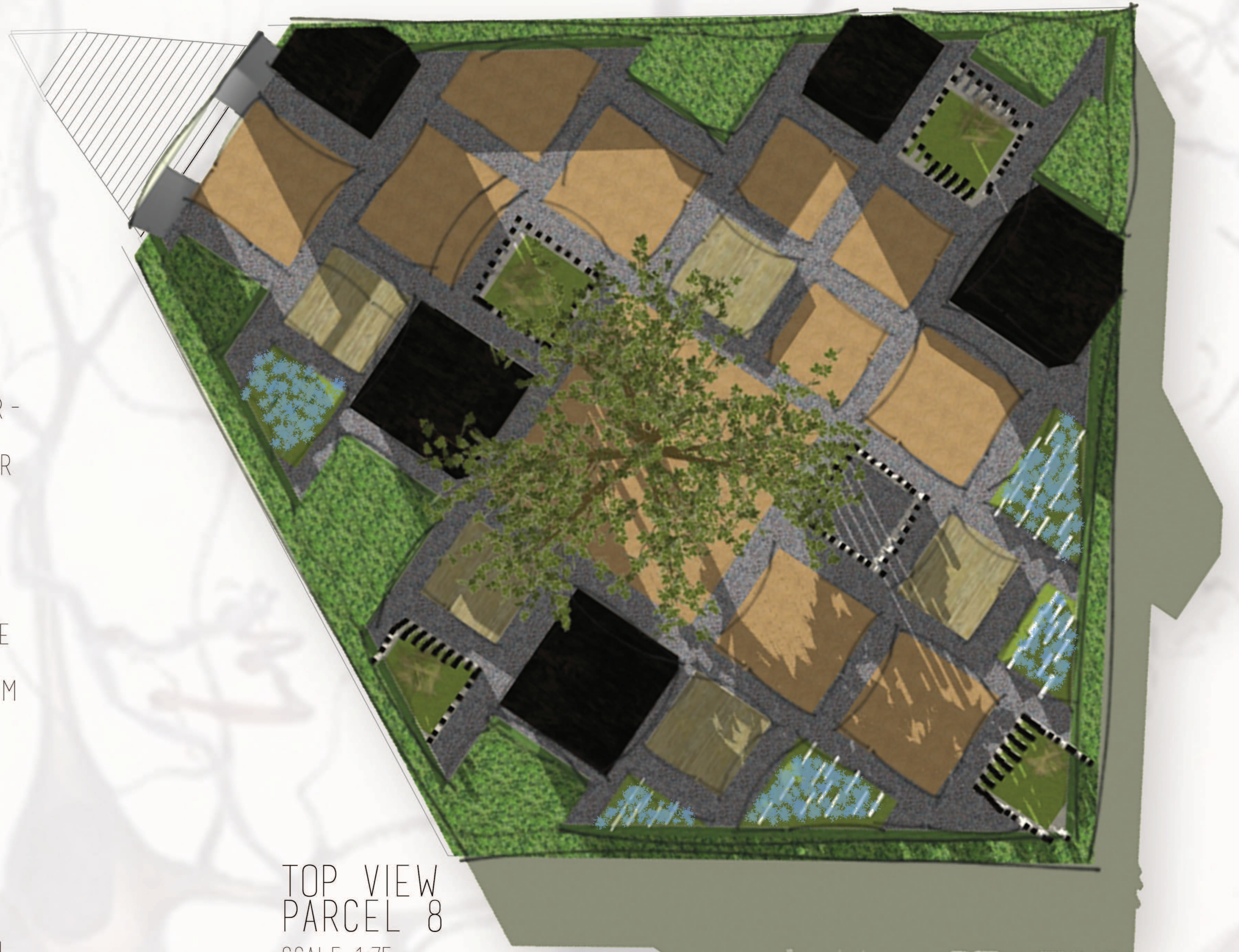
FORGET ME NOT - A GARDEN OF FADING MEMORIES

WELCOME TO



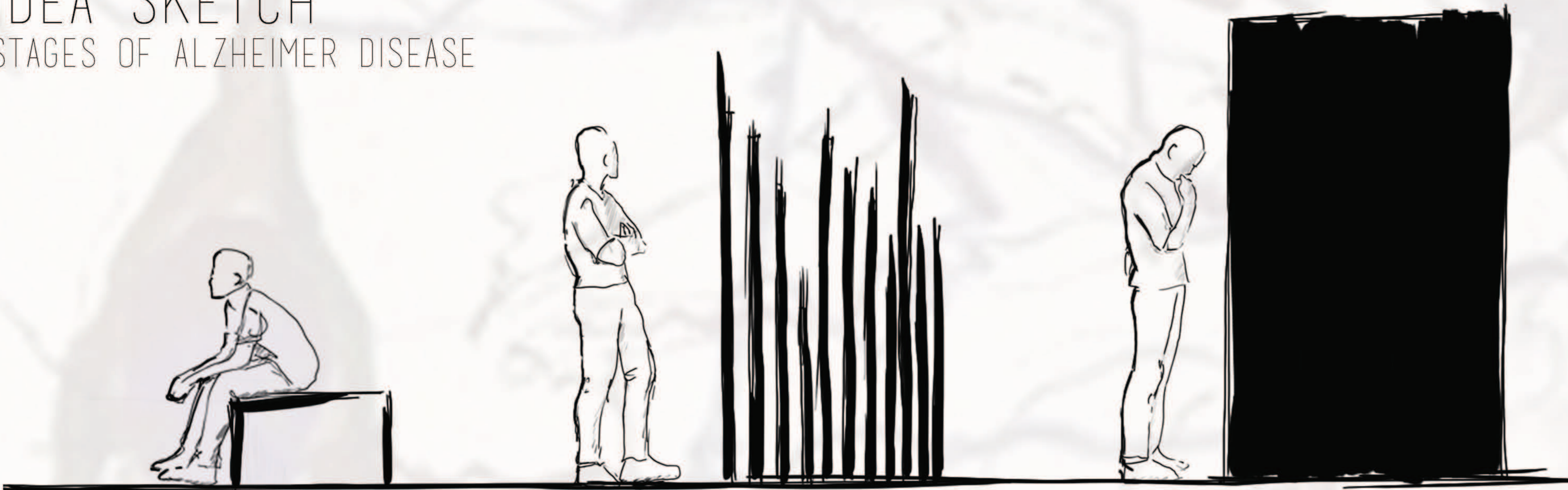
THE IDEA

IDEA: THE IDEA ORIGINALLY CAME FROM A QUESTION WE ASKED OURSELVES: - WHAT WOULD BE THE MOST SURREAL / ABSURD IDEA FOR THE GARDEN OF MEMORY? THE ANTITHESIS OF MEMORY WOULD BE FORGETFULNESS / LACK OF MEMORY. WE WANTED TO CONFRONT PEOPLE WITH THE COMMON SYMPTOMS OF THE ALZHEIMER'S DISEASE LOSS OF DIRECTION, CONFUSION, LONELINESS... WHILE MAKING THEM CHERISH THE MEMORIES THEY HOLD DEAR THE MOST.



TOP VIEW
PARCEL 8
SCALE 1:75

IDEA SKETCH STAGES OF ALZHEIMER DISEASE



FUNCTIONING MEMORIES.
INTERACTION WITH
THEM IS POSSIBLE

FADING MEMORIES.
INTERACTION WITH
THEM BECOMES DIFFICULT.
EARLY STAGES OF ALZHEIMER
DISEASE
FOR EXAMPLE:
LOSING OR MISPLACING
VALUABLE OBJECTS.

LOST MEMORIES.
NO INTERACTION
POSSIBLE.
LATE STAGES OF
ALZHEIMER DISEASE
FOR EXAMPLE:
NOT RECOGNIZING FAMILY
MEMBERS AND SURROUNDINGS.



MEMORY TREE.
HERE YOU CAN WRITE DOWN AND LEAVE MEMORIES YOU NEVER WANT TO FORGET

ENTRANCE VIEW

