

A FLASHBACK IN CELLULOID

Welcome to our outdoor multi-screen cinema tribute garden to classic black & white cinema. welcome to film as it was meant to be seen through celluloid, film reels and screens. The garden has been designed as Flashback, to recreate scenes from the past in black & white.

"A Flashback in Celluloid" is an open air multi-screen cinema where you can discover four classic film shot in black & white, we invite you to walk along the winding celluloid paths, where you could choose different ways to go to the four screens or take a glimpse in the projection room to see how reels of film passed through the projector and brought classic films to the big screen.

Did you know celluloid films were made from plants? Invented around 1860, celluloid was a plastic based on cellulose nitrate and camphor. Cellulose nitrate is obtained by treating the cellulose extracted from the plants with nitric acid.

Let us take you back to some of cinema's greatest moments! But before entering we suggest you do a Flashback in your own mind and try to remember B&W films, which one spring to mind? Maybe just a quote or a song? perhaps a character or a director? Which scenes did you recall?

Before you arrive to the screens, we will give you some clues regarding each film. Some of our movies mixed colour with black & white to emphasize an important point of the movie.

Would you like to discover them?

WHAT IS ON?

Did you guess any of them?

THE KID: 1921, written, directed and starring by CHARLIE CHAPLIN, his first full-length feature. Chaplin stars as his lovable Tramp character, raising an orphan (Jackie Coogan) he has rescued from the streets.

CASABLANCA: 1942, directed by Michael Curtiz, classic among the classics, romantic drama in Casablanca city between Rick Blaine (Humphrey Bogart) and Ilsa Lun (Ingrid Bergman).

THE WIZARD OF OZ: 1939, directed by Victor Fleming, musical film based on the book The Wonderful Wizard of Oz.

Starring by Judy Garland as Dorothy, a young girl from Kansas who is transported, along with her dog Toto, to the fantasy utopia of Oz by a tornado.

SCHINDLER'S LIST: 1993, directed by Steven Spielberg, caused such an impact on the audience that it became a classic until today. The true history of Oskar Schindler, a business man that saved over 1000 Polish Jews from almost a certain death during the Holocaust.

SCREEN 3 CASABLANCA

"Kiss me. Kiss me as if it were the last time".

"Louie, I think this is the beginning of a beautiful friendship".

"But what about us? We'll always have Paris".

SCREEN 4 THE WIZARD OF OZ

"Follow the yellow brick road".

"There's no place like home".

"It's not where you go. It's who you meet along the way".

SCREEN 2 SCHINDLER'S LIST

"Whoever saves one life, saves the world entire".

"I didn't do enough. You did so much. There will be generations because of what you did".

SCREEN 1 CHARLIE CHAPLIN IN THE KID

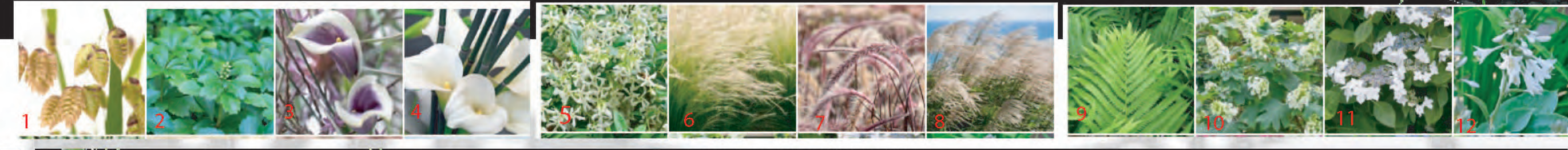
"Imperfection is beauty, madness is genius, and it's better to be absolutely ridiculous than absolutely boring"

Charlie Chaplin

PERSPECTIVE PLAN, PLOT 12

CAST OF MATERIALS

- 30. Black slate film reel path
- 31. Bamboo fence panel painted in black
- 32. Bamboo fence panel painted in white
- 33. Wooden boardwalk painted in white, edges painted black&white(recycled previous editions)
- 34. Wooden boardwalk painted yellow, edges painted b&w
- 35. Galician moss & stones (recycled p.e)
- 36. Corten steel cinema bench
- 37. Corten steel & transparent pvc outdoor umbrella
- 38. Grey pea gravel
- 39. Black pebbles
- 40. White pebbles
- 41. Polar white gravel 10 mm
- 42. Film Reel water feature jet, corten steel
- 43. Film Reel water feature, corten steel water bowls connected by corten steel rills
- 44. Charlie chaplin Sculpture



CAST OF PLANTS

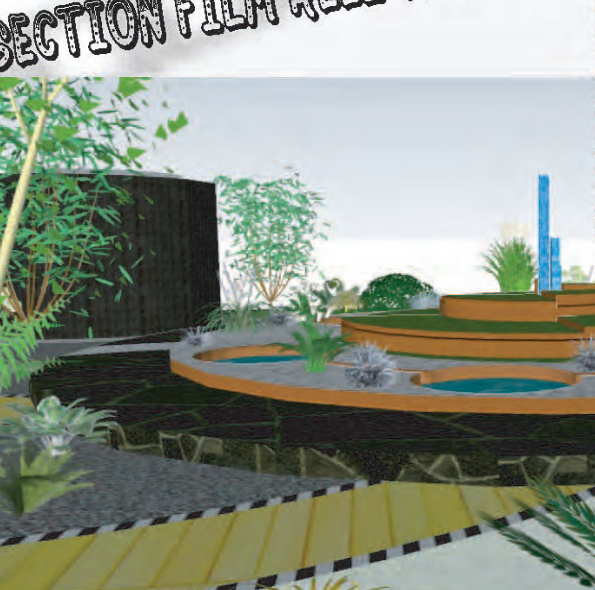
- 1. Briza media
- 2. Pachysandra terminalis
- 3. Zantedeschia 'Picasso'
- 4. Zantedeschia aethiopica
- 5. Tracheloperum jasminoides
- 6. Stipa tenuissima
- 7. Pennisetum glaucum 'Jade Princess'
- 8. Miscanthus sinensis 'Gracillimus'
- 9. Matteuccia struthiopteris
- 10. Hydrangea quercifolia 'Snow Queen'
- 11. Hydrangea macrophylla 'Lanarth White'
- 12. Hosta sieboldiana 'Elegans'
- 13. Hakonechloa macrocha
- 14. Centranthus ruber 'Albus'
- 15. Agapanthus africanus 'Albus'
- 16. Aeonium 'Zwartkop'
- 17. Ophiopogon planiscapus 'Nigrescens'
- 18. Jasminum officinale
- 19. Betula utilis var. jacquemontii
- 20. Athyrium niponicum var. pictum
- 21. Arbutus unedo
- 22. Athriscus sylvestris
- 23. Aloe aristata
- 24. Acer palmatum 'Osakazaku'
- 25. Phyllostachys nigra
- 26. Fargesia muriei
- 27. Asarium europaeum
- 28. Phyllostachys aureosulcata
- 29. Equisetum hyemale



SECTION SCREEN 4



SECTION FILM REEL WATER FEATURE



SECTION SCREEN 1 CHAPLIN IN THE KID SCULPTURE & CELLULOID PATH

