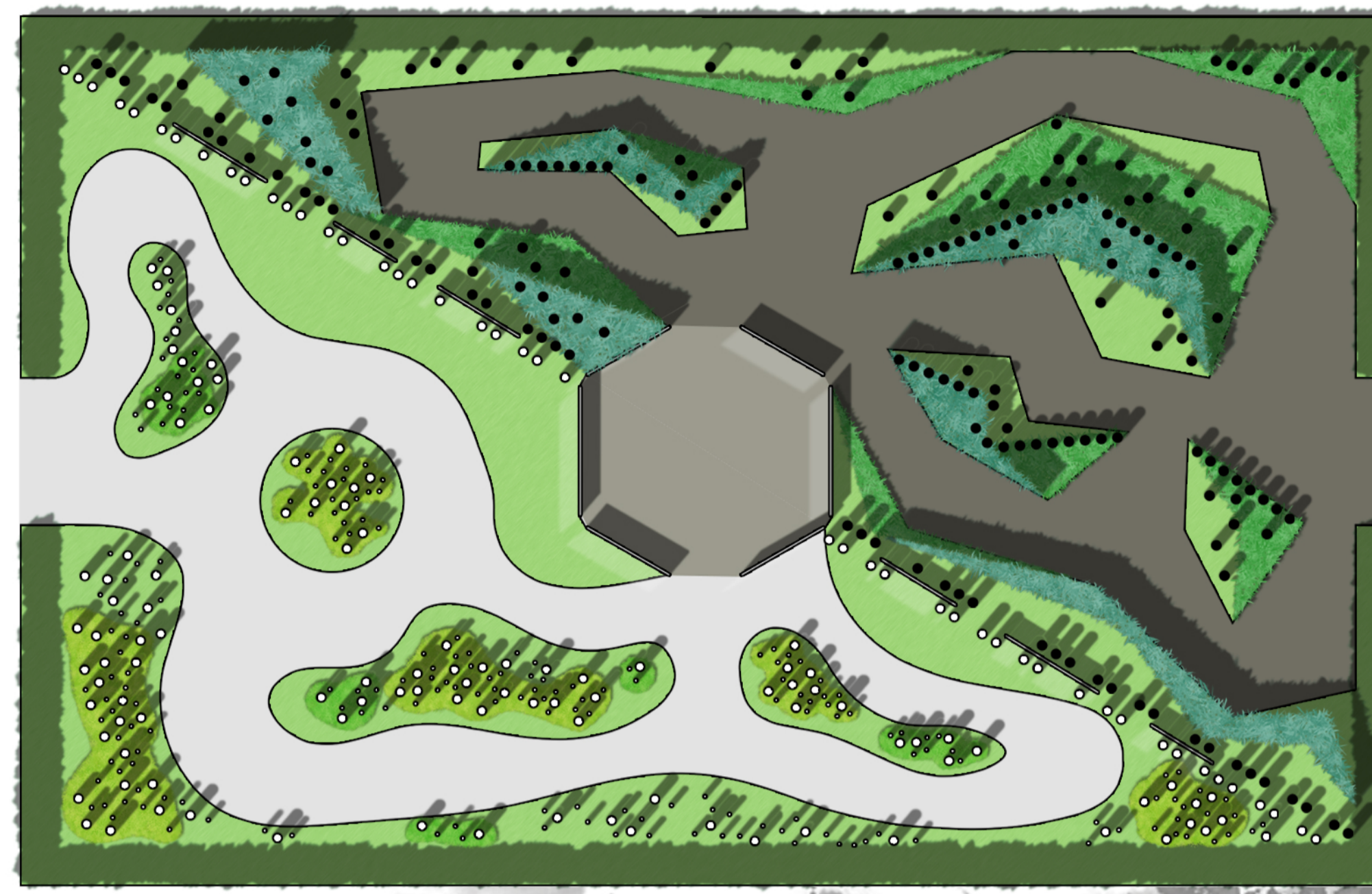
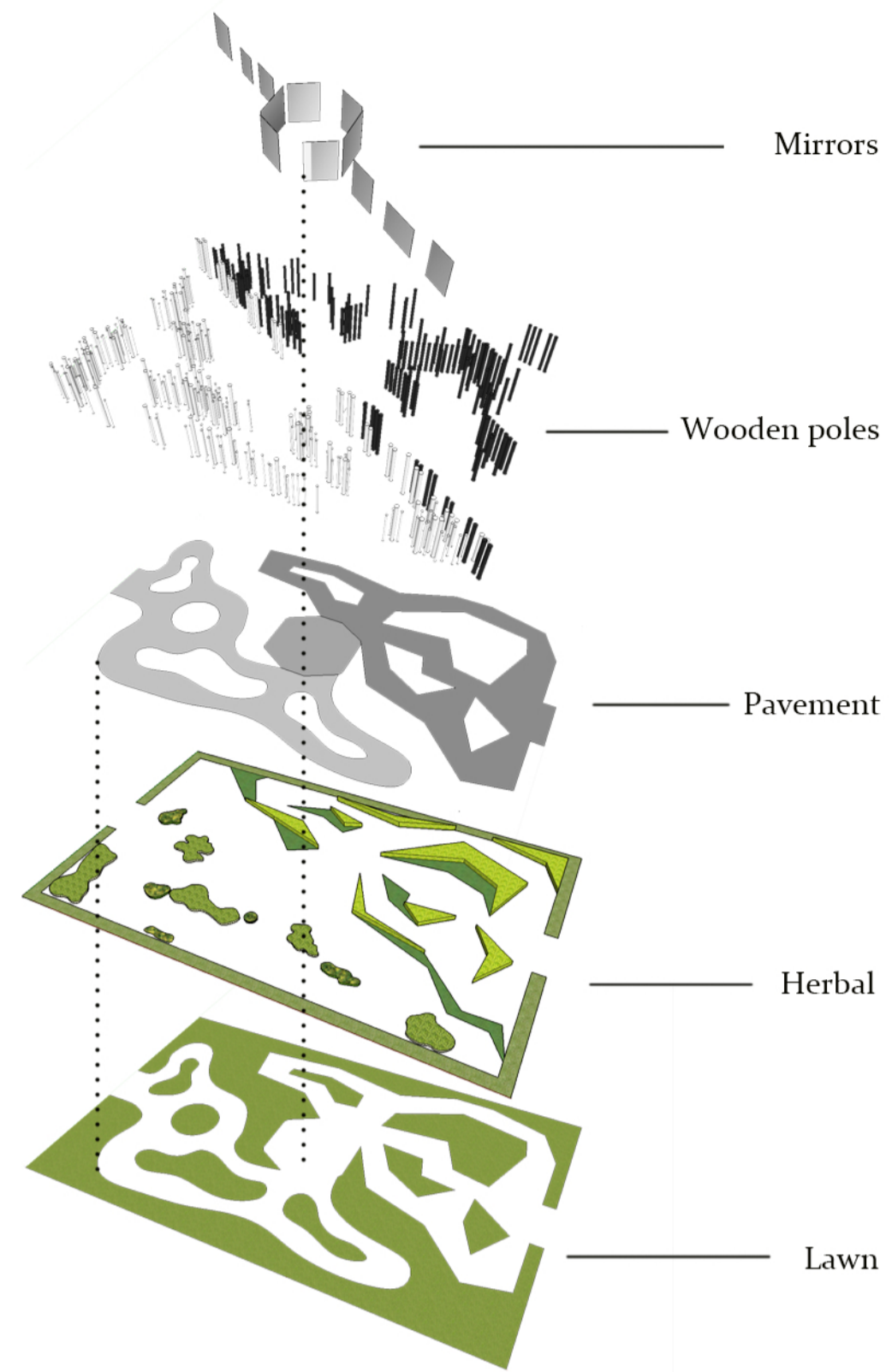


FOREST OF THE NIGHT



-  *Carex rosea*
-  *Carex oshimensis* 'Evergold'
-  *Phyllostachys nigra*
-  *Pleioblastus pygmaeus*
-  *Laurus nobilis*
-  Gravel of black slate
-  Gravel of white marble



The Forest of the Night is a garden to walk through and not to study, a garden in which to understand oneself but not to understand it. The project idea lays its foundations in the two "twin" poems, a masterpiece by William Blake, *The Tyger and The Lamb*.

: we cross the forest of the night, symbolized by high poles of rough or burnt wood, losing ourselves on our steps as in an initiatory journey; finally finding ourselves, to reach a central place where high mirrors are raised, where we can recognize each other, we can observe our eyes and hatch inside them the tiger or the lamb.

*Tyger Tyger burning bright,
In the forests of the night,
What immortal hand or eye,
Could frame thy fearful symmetry*

*Little lamb, who made thee?
Dost thou know who made thee?
Gave thee life, and bid thee feed?*

